

# Responsible AI

## - an evolving journey -

JACQUELINE INY  
VP, STRATEGY & TRANSFORMATION

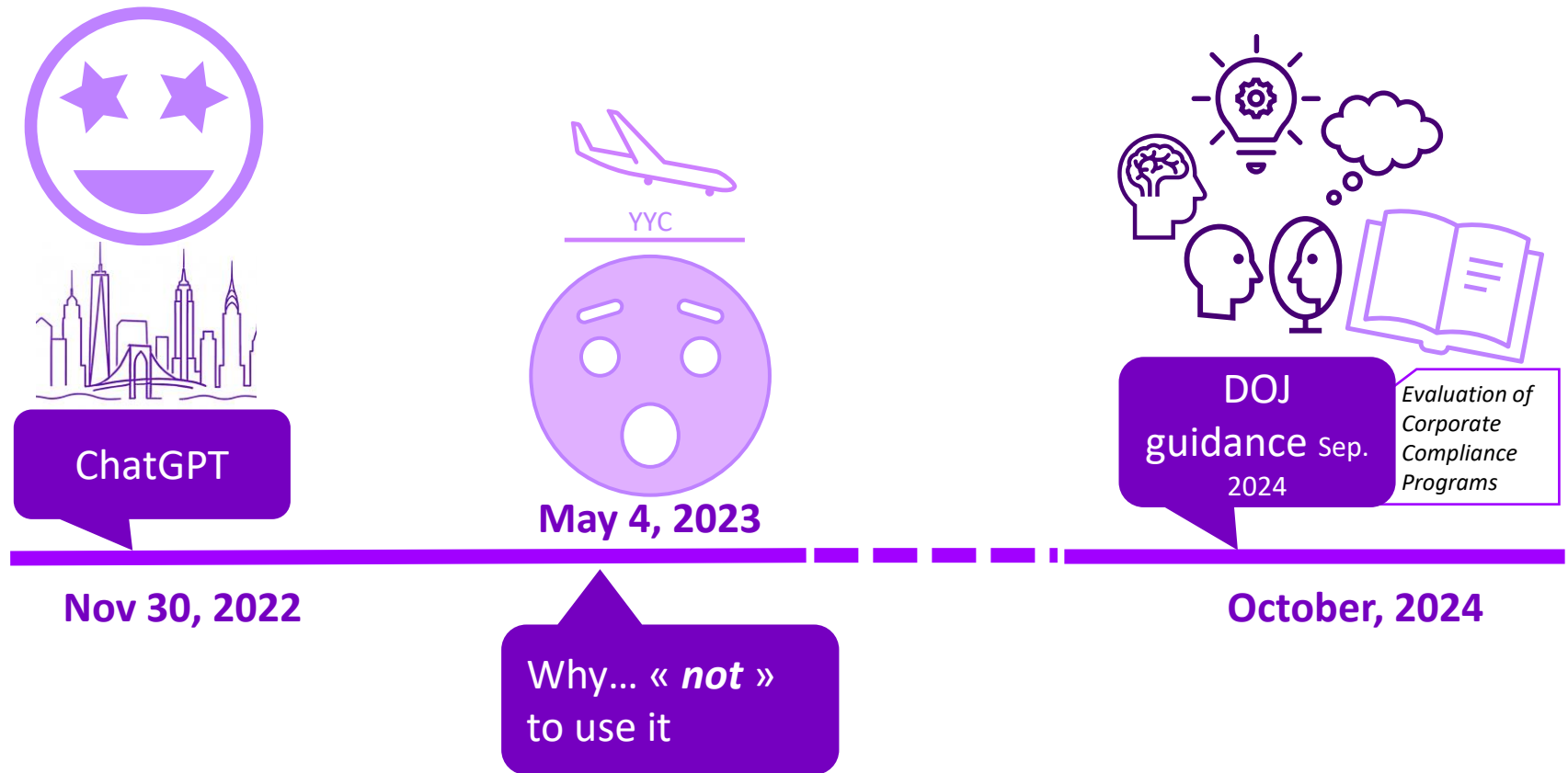
JUNE 12, 2025

# Responsible AI - An Evolving Journey

**Who...**



# Responsible AI - An Evolving Journey



# Responsible AI - An Evolving Journey



October, 2024

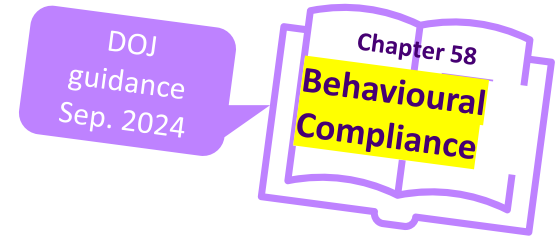
## RISK

- Legal
- Ethical
- Safety
- Human
- Environmental
- Operational
- Financial
- Reputational
- ...



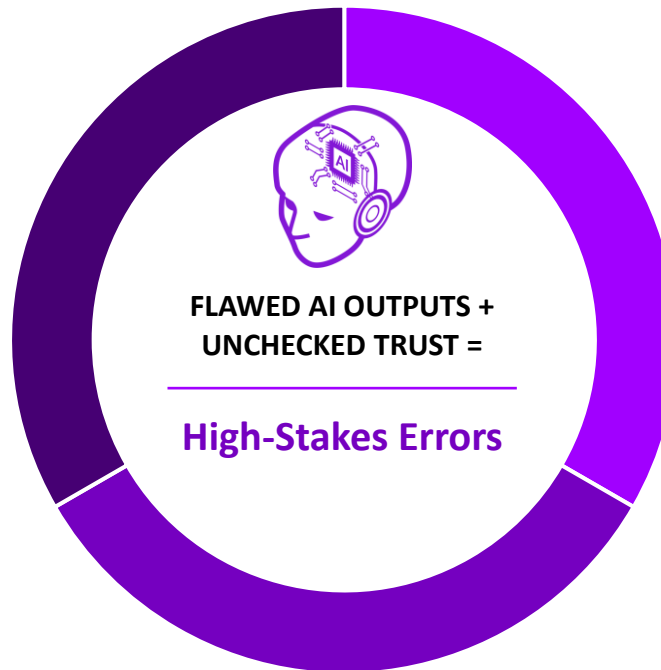
# Responsible AI

## AI Errors + Human Biases | Mitigating the Risk



### AI makes mistakes

- Biased inputs
- Flawed algorithms
- Misinterpretations
- Hallucination

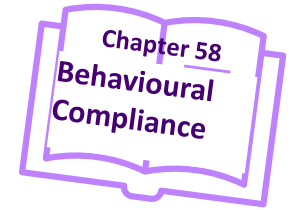


### Human biases amplify the risk

- Confirmation bias
- Automation bias

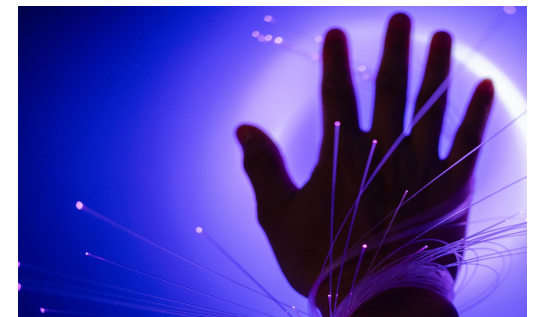
# Responsible AI

## Behavioural Compliance - Human Biases Amplify the Risk



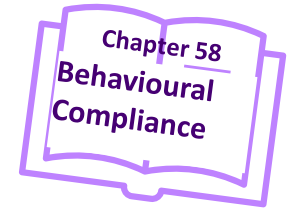
**Confirmation bias:** we seek outputs that reinforce our beliefs, even if wrong.

**Automation bias:** we over-rely on machine guidance, even when human judgement is superior.



# Responsible AI

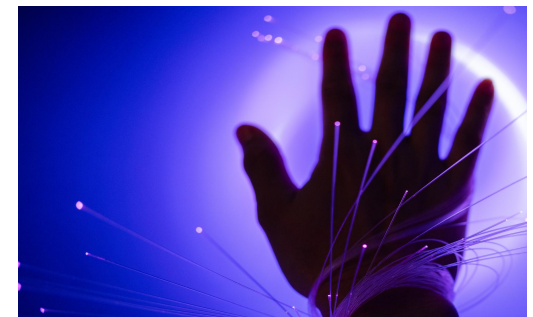
## Behavioural Science Principles - Mitigate Risk



**Social exchange:** collaboration and transparency.

**Planned behaviour:** supports and resources.

**Reflective learning:** internal and external lessons with reflection.



# Responsible AI

## Many Layers Beyond Behavioural Science

### 6. a)-g)... Managing Agentic Risk: Governance for Autonomous Systems

#### 6. Managing Agentic Risk: Governance for Autonomous Systems

- a) **Risk Taxonomy and Classification:** Enterprises must develop taxonomies for agent-related risk, categorizing by severity, recoverability, reputational impact, and legal exposure. Example categories include goal distortion, data leakage, unauthorized escalation, and non-replicable decisions.
- b) **Policy Simulation and Testing Frameworks:** Before production deployment, agents should be evaluated in digital twins of the enterprise environment. These testbeds must simulate real-world conditions and assess behavioral variance, cascading impact, and resilience.
- c) **Runtime Policy Enforcement:** Implement real-time monitors and circuit-breakers that detect violations of predefined operational bounds (e.g., API call frequency, financial exposure, customer-facing communications).
- d) **Continuous Red-Teaming and Penetration Testing:** Regular internal red-teaming must be applied to probe agentic decision boundaries, incentivization flaws, and exploit potential in reasoning paths.
- e) **Compliance Automation:** Tie agentic action auditing to compliance dashboards that automatically log alignment violations and flag them to legal or governance personnel.
- f) **Organizational Preparedness:** Develop organizational response plans for agent failures including rapid rollback mechanisms, user-facing mitigations, post-mortems, and escalation paths to executive leadership.
- g) **Ethical Design Standards:** Embed ethical considerations into system design through stakeholder-inclusive value alignment workshops, scenario modeling, and formal declarations of permissible and impermissible agent behaviors.

Copyright © 2025 Accenture.

#### **a) Risk Taxonomy and Classification:**

*Enterprises must develop taxonomies for [AI] agent-related risk, categorizing by severity, recoverability, reputational impact, and legal exposure. Example categories include goal distortion, data leakage, unauthorized escalation, and non-replicable decisions.*

Responsible AI – complexity has many layers





# Responsible AI

## Many Layers Beyond Behavioural Science



Generate a table showing AI Risks in Supply Chain, Consequences, Mitigations

AI Risks in Supply Chain	Consequences	Mitigations
Model hallucinations in critical decisions	Poor decisions... damage <b>relationships, safety, financials, operations</b> .	'Human-in-the-loop' protocols
Loss of explainability	Lack of transparency... undermines stakeholder <b>trust</b> and <b>auditability</b> .	Domain-tuned AI models
Regulatory non-compliance	Non-compliant documents/actions... <b>fines, legal impacts, shipment delays</b> .	AI compliance audits
Over-automation and skill atrophy	Over-reliance on AI... erode <b>human expertise</b> and operational <b>judgment</b> .	Staff rotation into AI-augmented roles
Poor forecasting in volatile markets	Inaccurate forecasts... <b>overstock</b> or <b>lost sales</b> opportunities.	Statistical & AI forecasting combined
➤ +++ ... <b>RESPONSIBLE AI has many layers</b>		



# Accenture's GenAI Innovation in Procurement

We have partnered with our clients to ideate, build, test, and scale

Results  
Achieved

**3-4% Cost  
Avoidance**  
**10%+ Hard  
Savings**

**70%+ Time  
Reduction to  
review contracts**

**80%+ Time  
Reduction to  
analyze  
specifications**

**35% Increased  
Productivity**

**10%+ Hard  
Savings**

## Intelligent Buying & Tail Spend Optimization

### Global Chemical Manufacturer

Developed two production ready Gen AI solutions: Intelligent Assisted Intake & Tail Spend Optimization generating over \$100M in savings and significant time efficiency

## Contract Analytics & Agent

### Global IT Manufacturer

Developed contract chatbot, summarization & comparison to quickly reference key contract information and ask specific questions.

## Sustainable Material Identification

### Global Healthcare Company

Created the ability to read package drawing specifications by SKU to understand and evaluate material sustainability

## Contract Clause Risk Remediation

### North American LNG Producer

Created a Contract T's and C's solution integrated with Ariba that allows the user to understand deviations in clauses against a standard T's and C's playbook.

## Commodity Market Intelligent Insights

### Global Personal Care Products Manufacturer

Developed a Commodity Forecast solution to derive rationale to cost driver fluctuations. Leveraged Gen AI to derive insights from Commodity Market Reports.

**INNOVATE RESPONSIBLY**



# Responsible AI - An Evolving Journey

Questions that shape the path forward

- What are 2 things that draw your attention – what about them?
- What question are you asking yourself?
- What question are you asking others?

# **Responsible AI**

## **-an evolving journey-**